

PRODUCT INFORMATION PACKET



Model No: A6T17XK23A

Catalog No: 119437.00

..1HP..1800RPM.56C.EPFC.230/460V.3PH.60HZ.CONT.40C.1.00SF.RIGID C FACE.....GENERAL
PURPOSE.AUTO.....

Explosion Proof



Regal and Leeson are trademarks of Regal Beloit Corporation or one of its affiliated companies.

©2018 Regal Beloit Corporation, All Rights Reserved. MC017097E



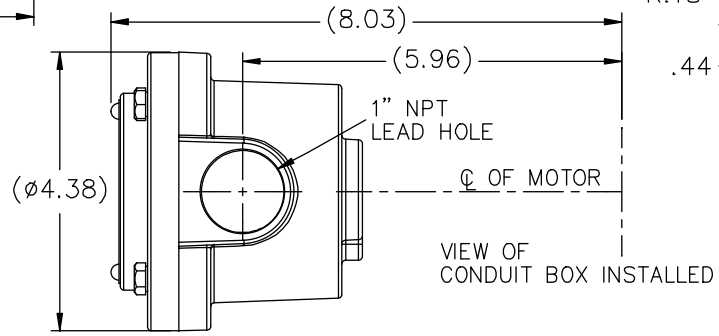
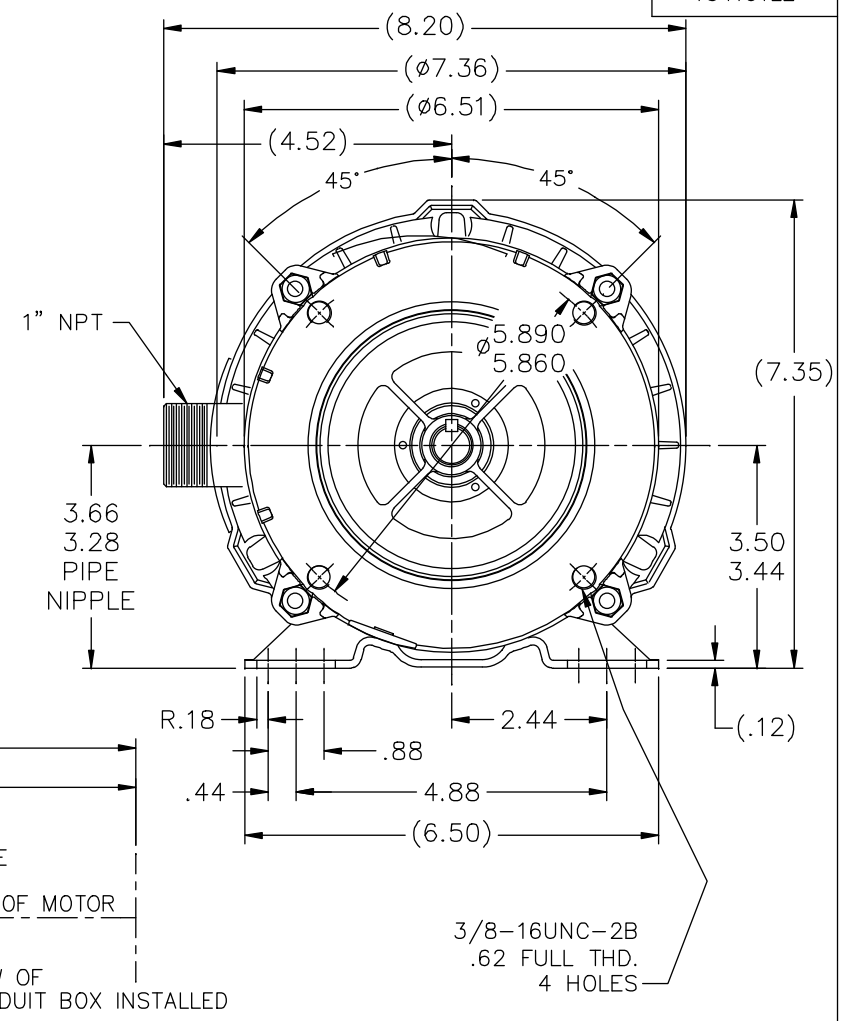
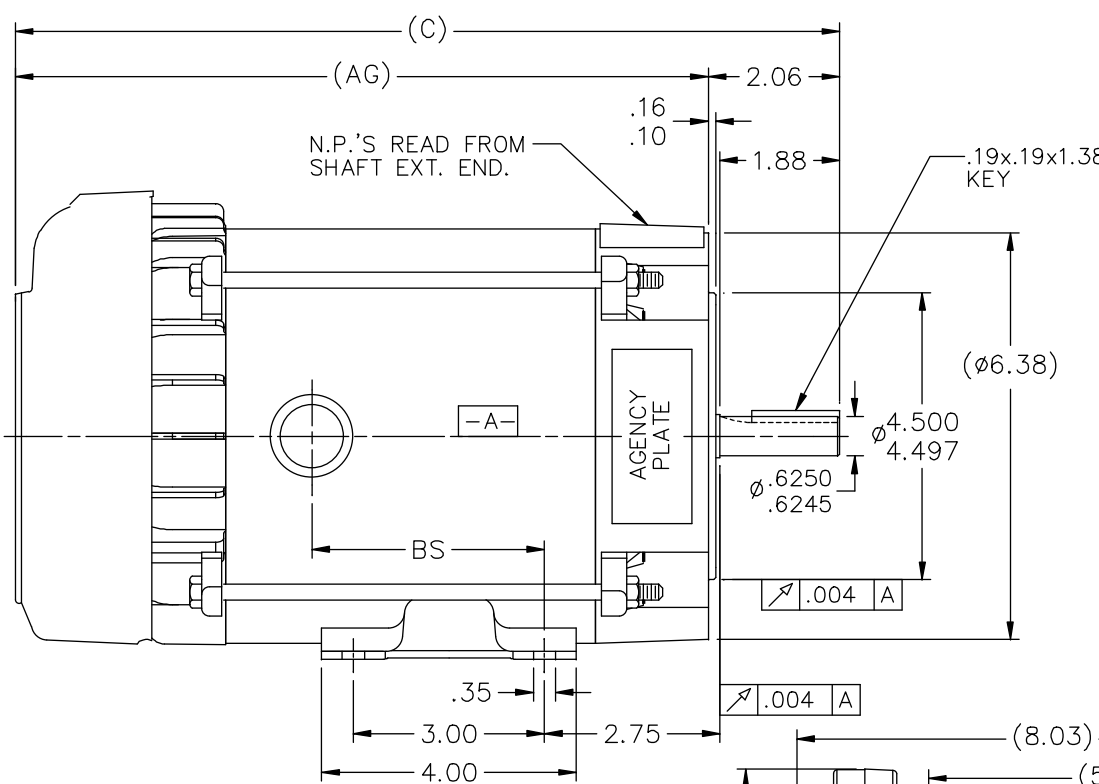


Nameplate Specifications

Output HP	1 Hp	Output KW	0.75 kW
Frequency	60 Hz	Voltage	230/460 V
Current	3.3/1.7 A	Speed	1725 rpm
Service Factor	1	Phase	3
Efficiency	85.5 %	Duty	Continuous
Insulation Class	B	Design Code	B
KVA Code	P	Frame	56C
Enclosure	Explosion Proof Fan cooled	Overload Protector	Automatic
Ambient Temperature	40 °C	Drive End Bearing Size	6203
Opp Drive End Bearing Size	6203	UL	Recognized
CSA	Y	CE	N
IP Code	54		

Technical Specifications

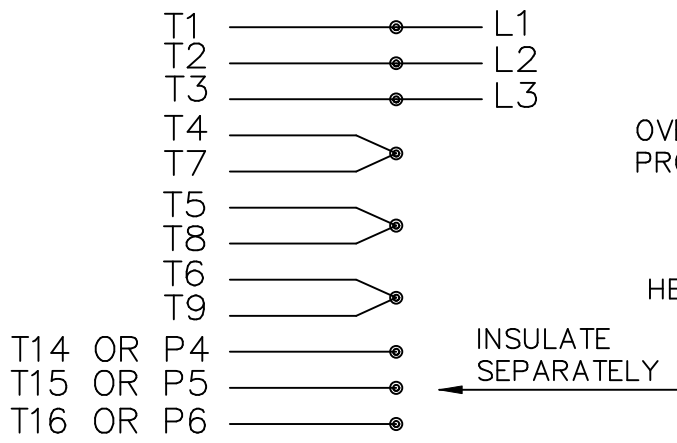
Electrical Type	Squirrel Cage Induction Run	Starting Method	Across The Line
Poles	4	Rotation	Reversible
Mounting	Rigid base	Motor Orientation	HORIZONTAL
Drive End Bearing	BALL	Opp Drive End Bearing	BALL
Frame Material	Rolled Steel	Shaft Type	NEMA 56
Overall Length	15.94 in	Frame Length	8.81 in
Shaft Diameter	0.625 in	Shaft Extension	1.88 in
Assembly/Box Mounting	F1 ONLY		
Outline Drawing	B-104191LE-881	Connection Diagram	A-EE7335-LE



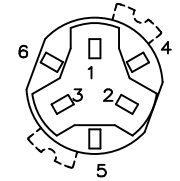
DASH	(C)	(AG)	BS		
631	13.44	11.38	4.15		
681	13.94	11.88	4.65		
731	14.44	12.38	5.15		
781	14.94	12.88	5.65		
831	15.44	13.38	6.15		
881	15.94	13.88	6.65		
931	16.44	14.38	7.15		
981	16.94	14.88	7.65		

		TOLERANCES UNLESS SPECIFIED		LEESON		ELECTRIC MOTORS GEARMOTORS AND DRIVES		DRAWN HLB 05-29-2002		
		DEC.	INCHES					CHK	ML 05-31-2002	
		.X	±.1			TITLE OUTLINE - 'C' FACE		APPD	SAS 05-31-2002	
3	COND. BOX INSTALLED VIEW UPDATED PER ECR-0044571	UD	10/15/13	ST	.XX	±.03	56 FR. - EXP. PR.	SCALE	1=2	
2	REVISED C'BOX PER CN 40784A	JJB	02/26/2007	ML	.XXX	±.005		REF		
1	NEW DRAWING	HLB	05-31-2002		.XXXX	±.0005	MAT'L.	FMF		
NO.	REVISION	BY & DATE	CHK	ANG	FINISH		PREV			
THIS DRAWING IN DESIGN AND DETAIL IS OUR PROPERTY AND MUST NOT BE USED EXCEPT IN CONNECTION WITH OUR WORK ALL RIGHTS OF DESIGN AND INVENTION ARE RESERVED THIS IS AN ELECTRONICALLY GENERATED DOCUMENT - DO NOT SCALE THIS PRINT				RFP	CAD FILE 104191LE		SIZE	DRAWING NO.	PAGE OF	REV.
				DIST	WP		B	104191LE	3	3

HIGH VOLTAGE CONNECTIONS

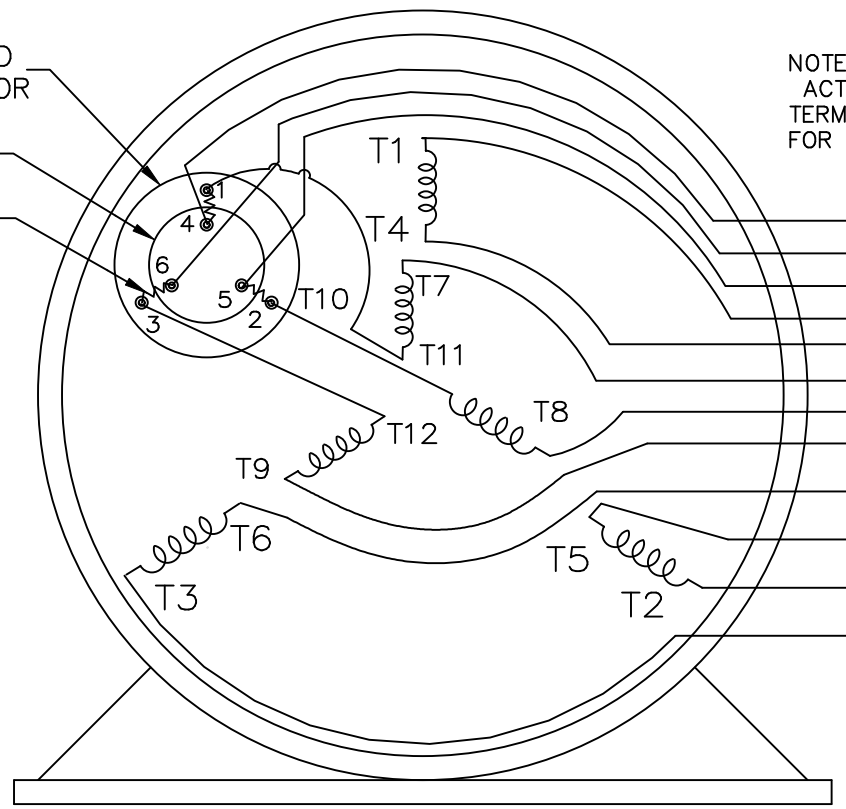


THREE PHASE – DUAL VOLTAGE MOTOR WITH OVERLOAD PROTECTOR



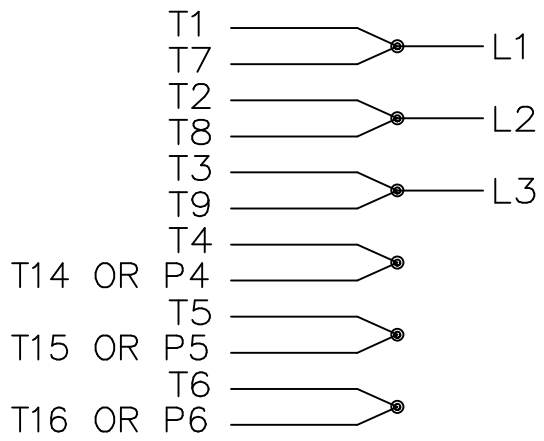
NOTE:
 ACTUAL PROTECTORS
 TERMINAL LOCATIONS
 FOR LEAD CONNECTIONS

OVERLOAD PROTECTOR
 DISC
 HEATER



T14 OR P4
 T16 OR P6
 T15 OR P5
 T1
 T4
 T7
 T8
 T9
 T6
 T5
 T2
 T3

LOW VOLTAGE CONNECTIONS



VIEW OF TERMINAL END

T2K
 T4D
 T6AN

				TOLERANCES UNLESS SPECIFIED		ELECTRIC MOTORS GEARMOTORS AND DRIVES	DRAWN NJS 04-20-2005	
				DEC.	INCHES		CHK ML 04-20-2005	
				.X	± -		APPD MJS 04-20-2005	
				.XX	± -		SCALE	
				.XXX	± -		REF	
				.XXXX	± -	MAT'L.		
NO.	REVISION	BY & DATE	CHK	ANG	± -	FINISH	PREV	
THIS DRAWING IN DESIGN AND DETAIL IS OUR PROPERTY AND MUST NOT BE USED EXCEPT IN CONNECTION WITH OUR WORK ALL RIGHTS OF DESIGN AND INVENTION ARE RESERVED THIS IS AN ELECTRONICALLY GENERATED DOCUMENT - DO NOT SCALE THIS PRINT				RFP	04-20-2005	CAD FILE EE7335_LE	SIZE A	DRAWING NO. EE7335-LE
				DIST	WP		PAGE	REV.



CERTIFICATION DATA SHEET

P.O. BOX 8003
WAUSAU, WI 54401-8003
PH. 715-675-3311

DATA VOLTS: 460

CONN. DIAGRAM: A-EET7335-LE
OUTLINE: B-104191LE-381
WINDING: ZT4257

FR 3

CAT #: 119437.00

TYPICAL MOTOR PERFORMANCE DATA

HP	KW	SYNC RPM	FL RPM	FRAME	ENCLOSURE	TYPE	KVA CODE	DESIGN	
1	0.75	1800	1765	56C	TEFC	TFR	P	A	
PH	HZ	VOLTS	AMPS	START TYPE	DUTY	INSL	S.F.	AMB	ELEV.
3	60/50	230/460#190/380	3.3/1.65#83.1/1.55	ACROSS THE LINE	CONT	B	1.15	40	3300
F.L. EFF		3/4 LD EFF		1/2 LD EFF		ELECT. TYPE			
85.5		84.0		81.5		SQ CAGE IND RUN			
F.L. PF		3/4 LD PF		1/2 LD PF					
68.0		59.5		46.5		82.5			
F.L. TORQUE	LR AMPS @ 460 V	L.R. TORQUE	B.D. TORQUE	F.L. RISE (°C)					
3.0 LB-FT	17.0	13.7 LB-FT	457%	16.8 LB-FT	560%	30			
PRESSURE @ 3	POWER	ROTOR WK²	MAX. LOAD WK²	SAFE STALL TIME	STARTS/HOUR	MOTOR WGT			
62 DBA	71 DBA	0.12 LB-FT²	0 LB-FT²	15 SEC.	2	48 LB.			

*** SUPPLEMENTAL INFORMATION ***

DE BRACKET TYPE	ODE BRACKET TYPE	MOUNT TYPE	MOTOR ORIENTATION	SEVERE DUTY	HAZARDOUS LOCATION	DRIIP COVER	SCREENS	PAINT
C-FACE	STANDARD	RIGID	HORIZONTAL	NO	DEF CL I GR C&D CL II GR	NO	NONE	BLUE (POWDER)
BEARINGS		SHAFT TYPE		SPECIAL DE		SHAFT MATERIAL		FRAME MATERIAL
DE BALL 6203	BALL POLYREX EM 6203	STANDARD 56	NONE	NONE	NONE	1144 STRESSPROOF (C-223)	ROLLED STEEL	
THERMOSTATS		WIDG RTD's		BRG RTD's		THERMISTORS		SPACE HEATERS
NONE		AUTOMATIC		NONE		NONE		NA
R1 (ohms/ph)	R2 (ohms/ph)	X1 (ohms/ph)	X2 (ohms/ph)	Xm (ohms/ph)	VIBRATION (in/sec)	FLOAT		
2.425	1.602	3.105	2.772	75.863	0.150	ODE		

* N O T E S *		INVERTER TORQUE: NONE		INV. HP SPEED RANGE: NONE	
		ENCODER: NONE		NONE	
		BRAKE: NONE		NONE PPR	
		FT-LB: NONE		NA	
		VOLTAGE: NONE		NONE	
		UL: NONE		NONE	

DATE:	1/24/2018	DATE:	

Data Sheet



Date: 1/24/2018

119437.00

Data @ 460 V

Motor Load Data

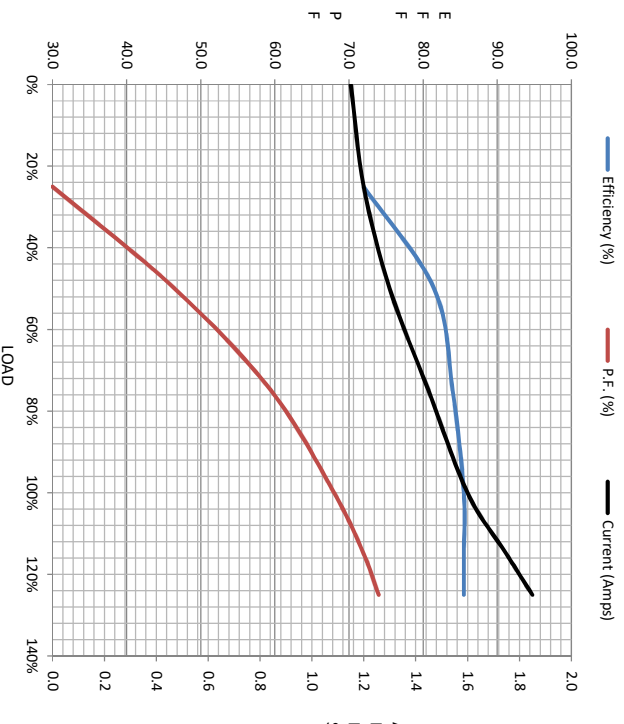
Load	0%	25%	50%	75%	100%	115%	125%	LR
Current (Amps)	1.15	1.20	1.30	1.45	1.60	1.75	1.85	17.0
Torque (ft-lb)	0.00	0.75	1.50	2.25	3.0	3.5	3.8	13.7
RPM	1800	1790	1785	1775	1765	1.760	1755	0
Efficiency (%)		72.0	81.5	84.0	85.5	85.5	85.5	
P.F. (%)	7.5	30.0	46.5	59.5	68.0	72.0	74.0	69.5

Motor Speed Data

	LR	Pull-Up	BD	Rated	Idle
Speed (RPM)	0	115	1270	1765	1800
Current (Amps)	17.0	16.0	11.0	1.60	1.15
Torque (ft-lb)	13.7	12.5	16.8	3.0	0.00

Information Block

HP	1.0			
Sync. RPM	1800			
Frame	143			
Enclosure	TEFC			
Construction	TFR			
Voltage	230/460#190/380 V			
Frequency	60 Hz			
Design	A			
LR Code letter	P			
Service Factor	1.15			
Temp Rise @ FL	30 °C			
Duty	CONT			
Ambient	40 °C			
Elevation	1,000 feet			
Rotor/Shaft wk²	0.12 LB-Ft²			
Ref Wdg	Z14257 FR			
Sound Pressure @ 1M	62 dBA			
VFD Rating	NONE			
Outline Dwg	B-104191LE-881			
Conn. Diag	A-EE7335-1E			
Additional Specifications:				
0				
EQUIV CKT (OHMS / PHASE)				
R1	R2	X1	X2	Xm
2.4250	1.6020	3.1050	2.7720	75.8630



Speed - Torque Curve

